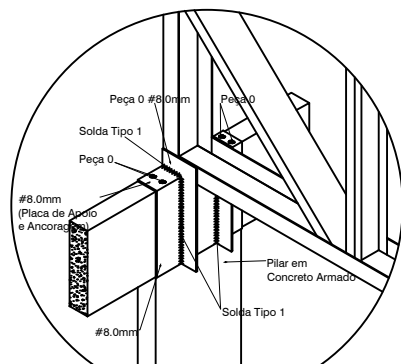
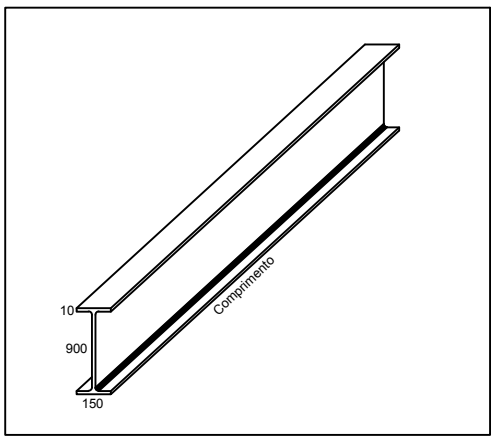
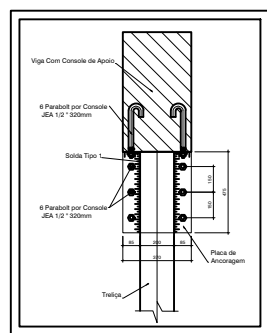
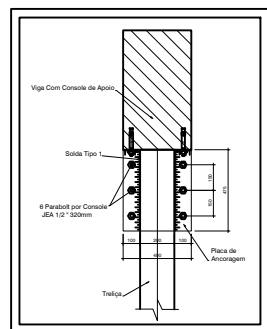
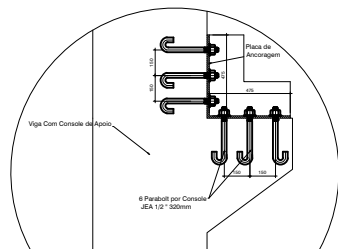
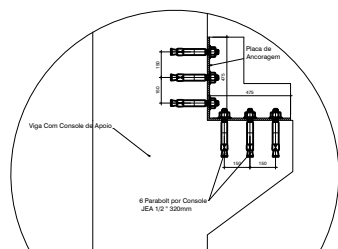
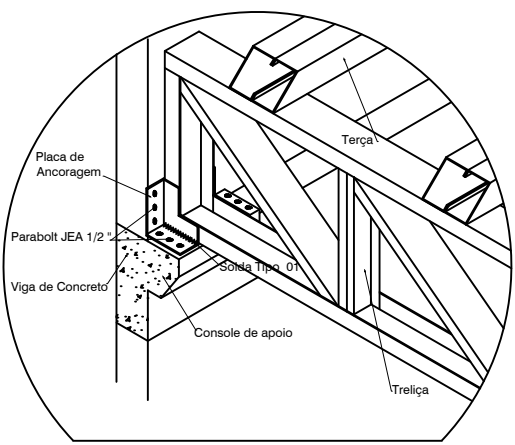
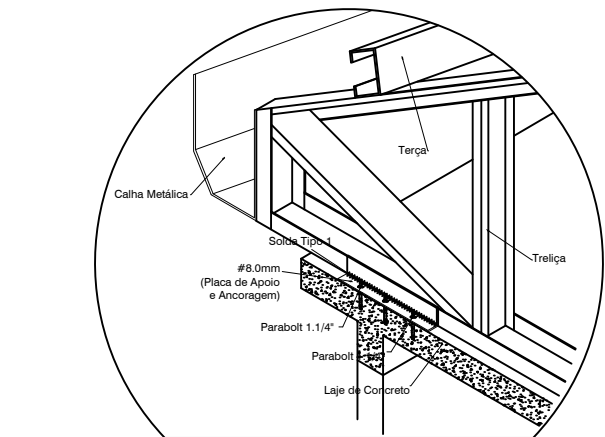
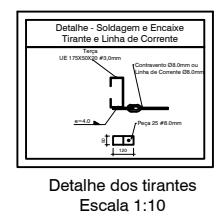
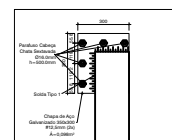
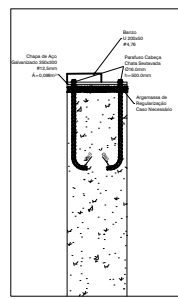
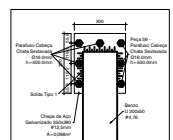
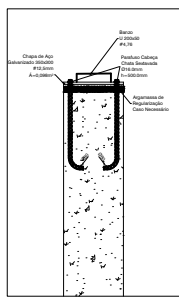


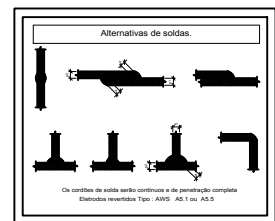
DETALHE 01



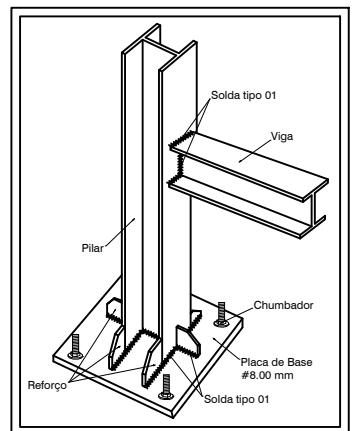
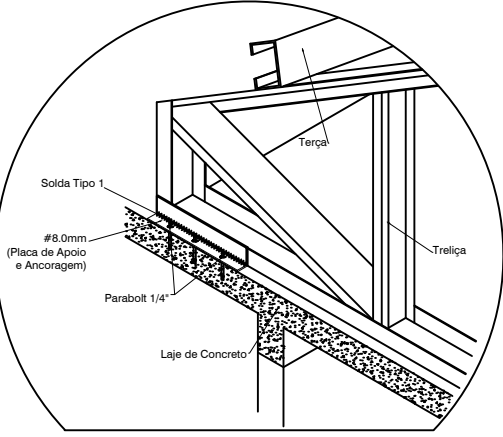
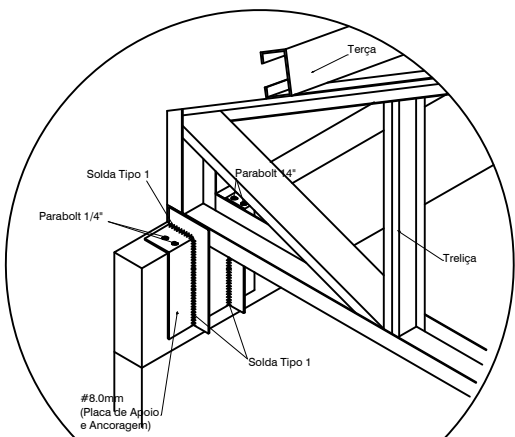
Placa de Apoio e Ancoragem  
Escala 1:10



Detalhe dos tirantes  
Escala 1:10



Detalhe do tipo de solda  
Escala 1:10

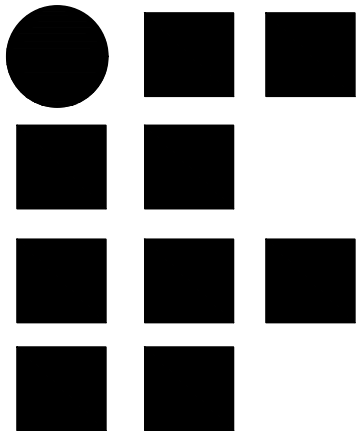
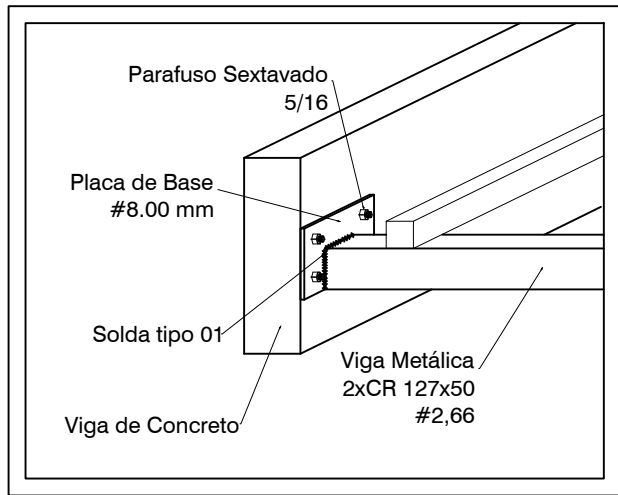


**NOTAS**

- As treliças serão fabricadas com aço AMT 36
- Todas as soldas serão de tipo 1, com cordão contínuo
- Aplicar uma demão de tinta zarcão
- Treliça em pintura eletrolítica branca com duas demãos

**NOTAS**

- As treliças serão fabricadas com aço AMT 36 250 MPA
- Todas as soldas serão de tipo 1, com cordão contínuo
- Aplicar tres demão de tinta eletrolítica c/proteção anticorrosiva
- A placa de base, deverá ser usinada com leve inclinação a não permitir que acumule água de chuvas.



Instituto Federal Farroupilha  
**IFFAR**

RUA Uruguai, BAIRRO PLANALTO, PANAMBI - RS.

**Cobertura - ADMINISTRATIVO**

PROPRIETÁRIO:

RESP. TÉCNICO:

ENG. CIVIL VERONICA DA ROSA OLEA CREAIRS 14.8007

ÁREA:  
1.604,63 m²

ESCALA:  
1/50

DETALHAMENTO

**PRANCHA 3**

DATA ABRIL 2018.

DESENHO

PROJETO Nº

DIREITOS AUTORAIS RESERVADOS - LEI Nº 9610/98